

Water air cooler HFC series – remote free cooling

		HFC50	HFC50S	HFC100	HFC100S	HFC150	HFC150S	HFC200	HFC200S	HFC250	HFC250S	HFC300	HFC300S	HFC400	HFC400S
CAPACITY	kW	50	40	99	80	156	126	197	159	255	205	323	256	415	330
AIR FLOW	mc/h	19.500	14.900	38.900	29.700	58.300	44.600	77.800	59.500	97.200	74.400	144.900	108.300	181.000	135.000
Δ T	°C	5	5	5	5	5	5	5	5	5	5	5	5	5	5
WATER FLOW	mc/h	7,70	6,19	15,40	12,40	24,26	19,54	30,62	24,62	39,68	31,96	55,30	43,84	71,12	56,50
PRESSURE DROP	kPa	19,76	13,45	19,65	13,36	62,54	42,6	24,09	16,23	45,05	30,46	32,24	21,26	60,75	40,24
TOTAL SURFACE	m ²	235,10	235,10	471,60	471,60	707,50	707,50	943,30	943,30	1179,00	1179,00	1443,00	1443,00	1804,00	1804,00
INTERNAL VOLUME	lt	35,65	35,65	71,30	71,30	107,00	107,00	142,60	142,60	178,30	178,30	218,20	218,20	272,70	272,70
FANS	nr	1	1	2	2	3	3	4	4	5	5	2X4	2X4	2X5	2X5
MAX ABSORBED POWER	kW	2,2	1,2	4,4	2,4	6,6	3,6	8,8	4,8	11,0	6,0	17,6	9,6	22,0	12,0
MAX ABSORBED CURRENT	A	3,5	1,9	7,0	3,8	10,5	5,7	14,0	7,6	17,5	9,5	28,0	15,2	35,0	19,0
SOUND PRESSURE LEVEL*	dbA	52	45	55	48	57	50	58	51	59	52	61	54	62	55
LENGHT	mm	1600	1600	3200	3200	4800	4800	6400	6400	8000	8000	6800	6800	8500	8500
WEIGHT	kg	180	180	340	340	490	490	690	690	800	800	1150	1150	1420	1420

The manufacturer reserves the right to modify specifications without notice.

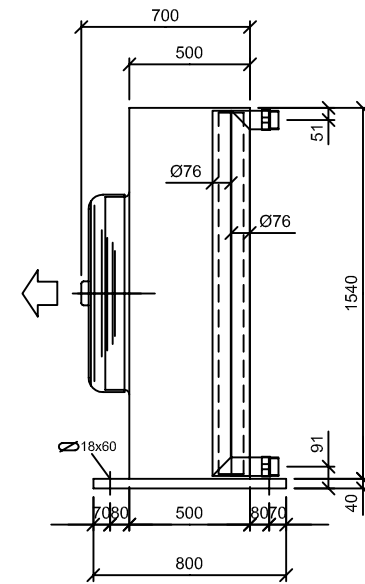
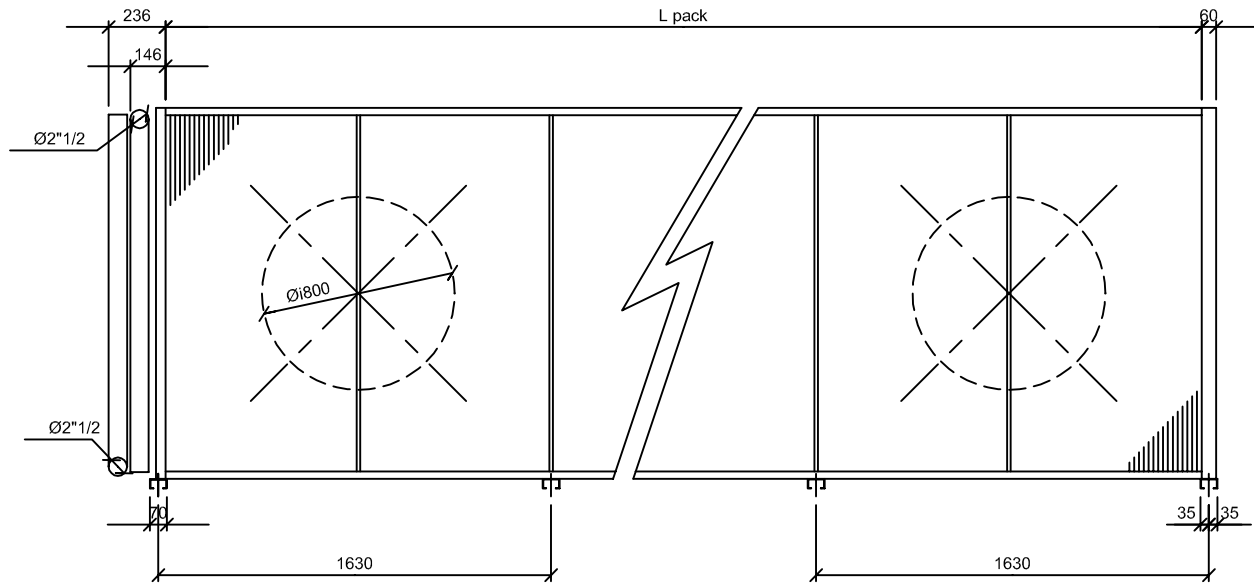
DATA REFERRED TO:

FLUID: ETYLENE GLICOL 30 %
 AIR INLET TEMPERATURE 35°C
 INLET WATER TEMPERATURE 45°C
 OUTLET WATER TEMPERATURE 40°C

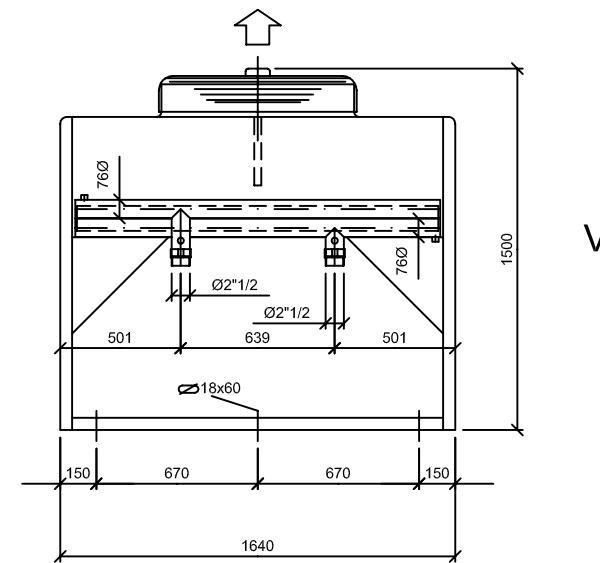
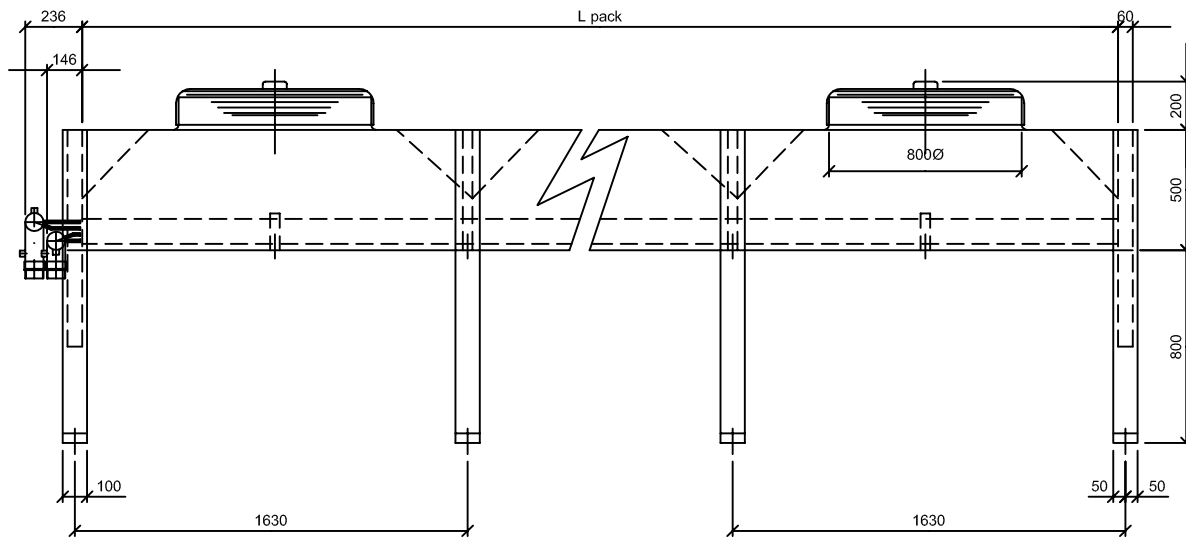
V = VERTICAL AIR FLOW VERSION
 H = HORIZONTAL AIR FLOW VERSION

HFC... = Δ FAN CONNECTION
 HFC...S = Y FAN CONNECTION

* Free spherical field, 10 m from the battery side, 1m from support base

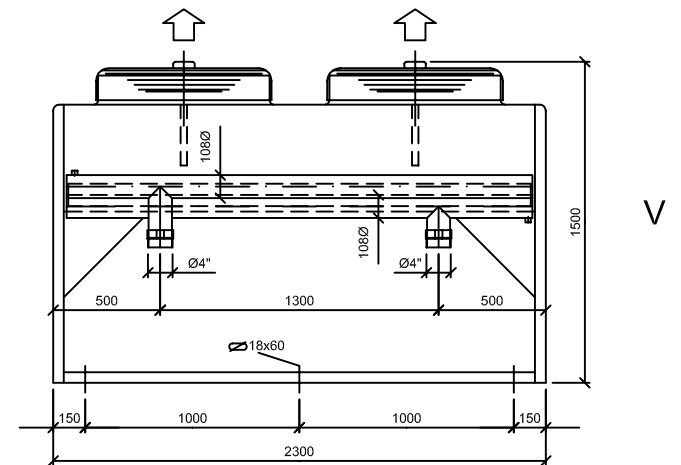
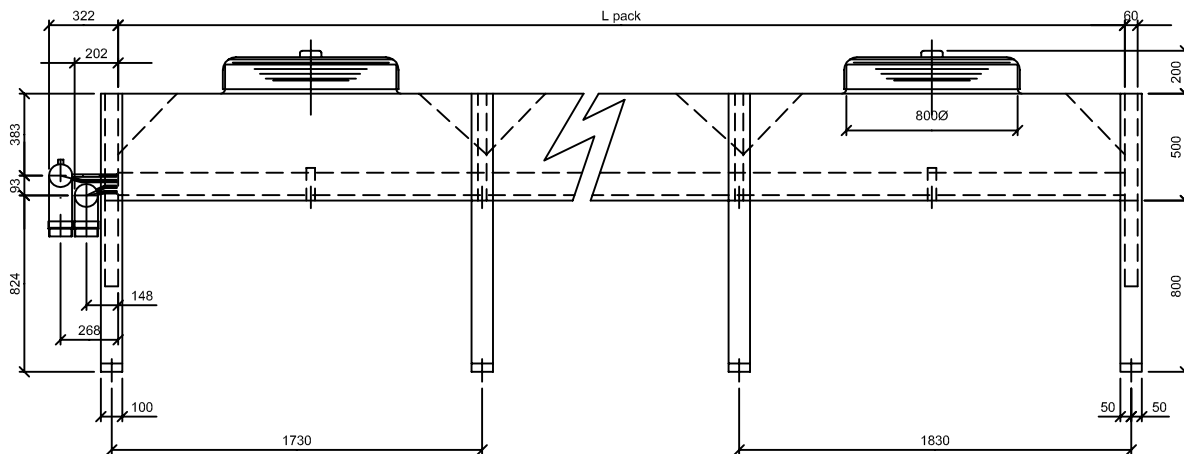
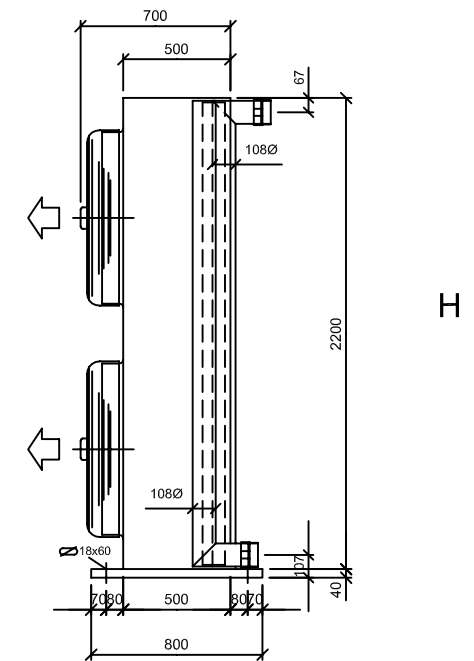
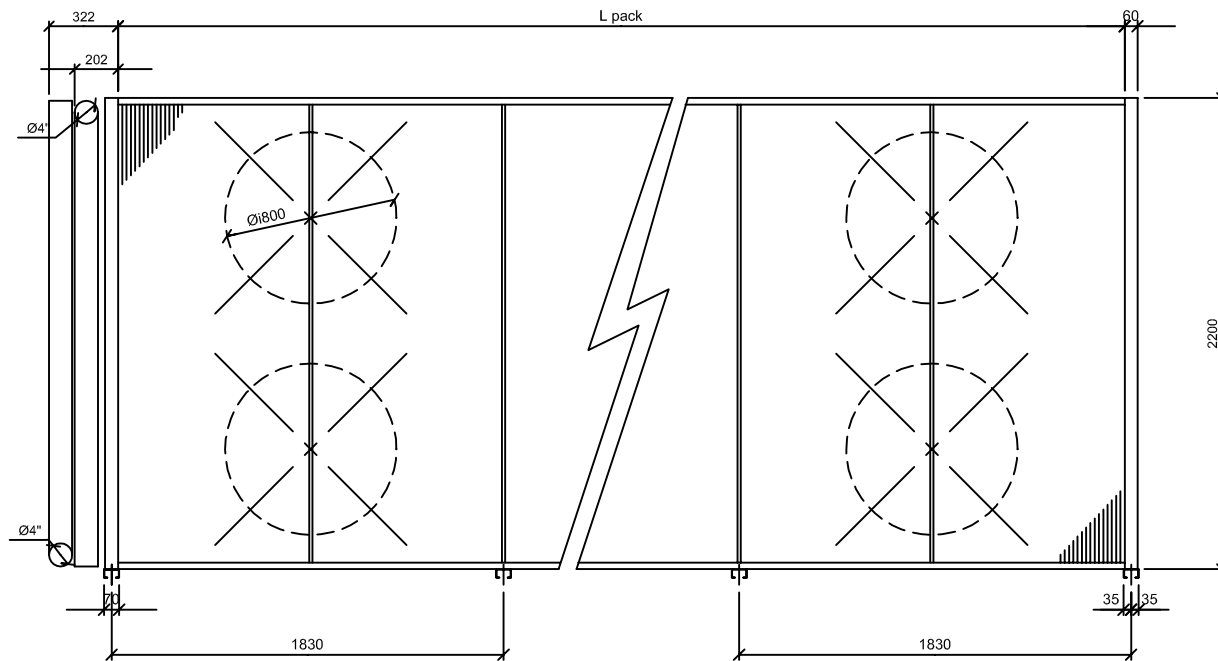


H



V

Scala-Scale	Data-Date	Dis.to-Drawn	N°Pezzi	HITTEMA	
	25/02/05	Quaglio R.	01		
Peso-Weight Kg.	Materiali-Materials				
Denominazione-Denomination				DIS-DRAW N.	HIT800
RAFFREDDATORE D'ACQUA / WATER COOLER - MOD. HFC.50 + HFC.250				Revisione	00
Particolare-Detail				PROGRAM.N.	
DIMENSIONI D'INGOMBRO / OVERALL DIMENSION					



Scala-Scale	Data-Date	Dis.to-Drawn	N°Pezzi	HITTEMA
	25/02/05	Quaglio R.	01	
Peso-Weight Kg.	Materiali-Materials			
Denominazione-Denomination				DIS-DRAW N.
RAFFREDDATORE D'ACQUA / WATER COOLER - MOD. HFC.300 + HFC.400				HIT800-1
Particolare-Detail				Revisione
DIMENSIONI D'INGOMBRO / OVERALL DIMENSION				00
				PROGRAM.N.