

HER - Automatic condensate drain trap

HER is primarily used in filters. Its task is the automatic discharge of condensate and oil. When the accumulated condensate exceeds to discharge level, the float rises, opens the outlet aperture, and discharges condensate from the system. A manual emergency drain allows the operator to manually drain the filter, and confirm the automatic operation.



Technical data

- material: durable plastic, brass
- operating temperature range: 0-120°C (32-248°F)
- operating pressure range: 0-16 barg (0-232 psig)
- connection: R 1/2"
- oil resistant o-ring

HS 20 - Automatic condensate drain trap

The HS20 is used when larger amounts of condensate (up to 300 l/h) must be automatically discharged from filters, pressure vessels and cyclone separators. It ensures reliable operation up to 20 barg (290 psig). When the condensate exceeds the discharge level, the float rises, opens the discharge aperture and discharges condensate from the system. We recommend the installation of the filter or nipple, which improves the performance of the HS20.



Technical data

- material: aluminium alloy
- operating temperature range: 0 - 120°C (32 - 248°F)
- operating pressure range: 0 - 20 barg (0 - 290 psig)
- connection: R 1/2"
- oil resistant o-ring

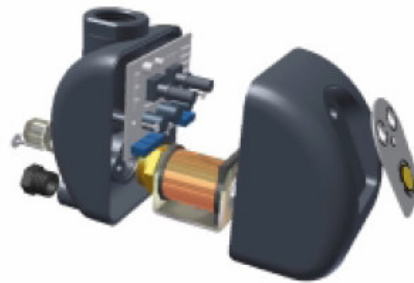
TD 16 – Timer controlled condensate drain

TD16 is condensate drain which allows the user to discharge condensate for a controlled time and duration. Its purpose is draining accumulated condensate from filters or pressure vessels. TD16 is adaptable according to different applications, discharge frequency and opening time.



Benefits

- easy opening time settings
- easy opening frequency settings
- no moving parts
- reliable operating without clogging and unsensible to outside conditions
- test button
- warning LED light for condense disposal phase
- DC and AC versions



Technical data

- min/max operating temperature: 1-60°C / 33-140°F
- min/max operating pressure: 0-16 barg / 0-232 psig
- input connection: R 1/2"
- output connection: R 1/8"
- output pipe diameter: 6-8 mm
- capacity at 10 bar (145 psi): 0,2 - 300 l/h / 0,00012 - 0,17 cfm
- mass: 0,35 kg / 0,77 lb
- housing material: dylamid

Model	Voltage	Frequency	El. power	Protection	Cable
TD16 24VAC	24V +/- 10%	50-60 Hz	10 W	IP65	3x0,75mm2
TD16 110VAC	110V +/- 10%	50-60 Hz	10 W	IP65	3x0,75mm2
TD16 220VAC	220V +/- 10%	50-60 Hz	10 W	IP65	3x0,75mm2

Dimensions

- A.....92 mm (3 5/8")
- B.....97 mm (3 13/16")
- C.....68 mm (2 10/16")



CDi 16 – Intelligent condensate drain

CDi 16 is used for the automatic discharge of accumulated condensate from compressed air systems.

The basic principle is contactless measurement of the accumulated condensate which is then discharged without the loss of valuable compressed air.

Condensate water level is perceived by touchy electronics. Condensate drain disposal is performed without compressed air losses.

CDi 16 is made of durable plastic housing, which protects electronics inside the device from outside harmful conditions.



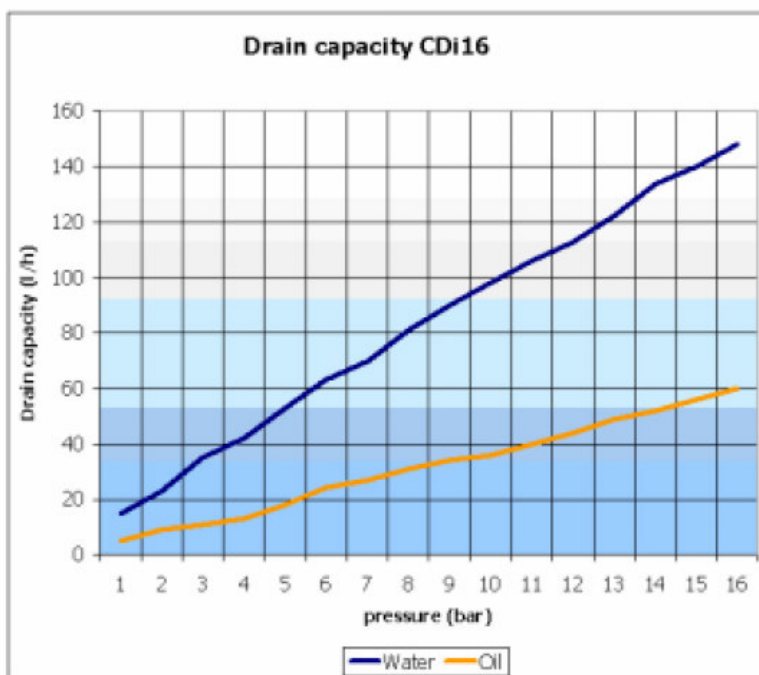
Benefits

- contactless measuring
- no moving parts
- reliable operation without clogging, and impervious to outside conditions
- test button
- selfcontrolling electronics
- warning LED light for "drain operating" and "alarm"
- DC and AC versions
- IP 65 electrical protection



Technical data

- min/max operating temperature: 1-60°C / 33-140°F
- min/max operating pressure: 0-16 barg / 0-232 psig
- input connection: R 1/2"
- output connection: R 1/8"
- output pipe diameter: 6-8 mm
- capacity at 10 bar (145 psi): 98 l/h / 0,05 cfm
- mass: 1,0 kg / 2,2 lb
- housing material: dylamid



Dimensions

- A.....92 mm (3 5/8")
- B.....97 mm (3 13/16")
- C.....68 mm (2 10/16")

